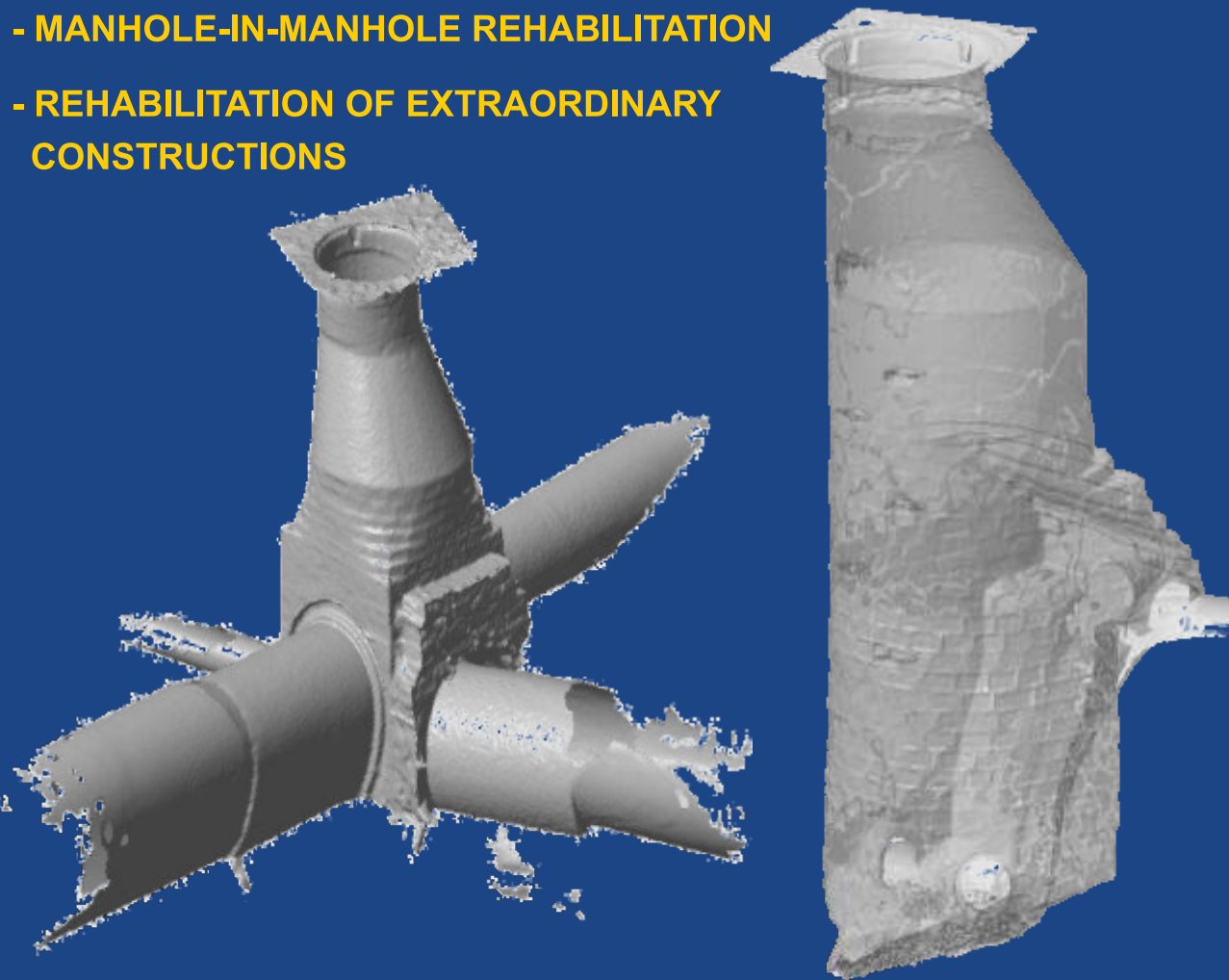




MANHOLE REHABILITATION

- FLEXLINER® - TRENCHLESS MANHOLE REHABILITATION
- MANHOLE-IN-MANHOLE REHABILITATION
- REHABILITATION OF EXTRAORDINARY CONSTRUCTIONS



REHABILITATION WITH FRP COMPONENTS

The PREDL® manhole-in-manhole rehabilitation process with a FRP manhole base-liner is a static rehabilitation solution for severely attacked and damaged sewer manholes. A FRP pipe is used for the further vertical renovation of the riser construction. At the correct installation height, the riser spigot enables a tight connection to a precast concrete cone.



DURABLE AND EFFECTIVE REHABILITATION

- Manhole work with sheeting necessary
- Permanent corrosion protection of the manhole
- Complicated manhole geometries can be realized
- Static load-bearing rehabilitation system

THE KNOW-HOW PACKAGE: DATE ACQUISITION – ADVICE – REHABILITATION

With project-related manufactured FRP components, PREDL® has the right rehabilitation solution for almost every problem:

- ➔ For heavy-duty industrial manholes, pump manholes, dry weather channels in various profiles, screen structures in sewage treatment plants etc...
- ➔ PREDL® offers the complete package from condition assessment/digitizing over the joint development of the rehabilitation solution down to the production of the rehabilitation components and support during on-site installation.



Stand 04/2022

PREVENTION OF WATER CONTAMINATION AND CANAL REHABILITATION

Manholes are permanently exposed to corrosion. Aggressive media not only destroy the sewage channel area, but also attack rising manhole elements such as rings and cones.

Depending on the state of the old manhole and the local factors, PREDL offers different rehabilitation procedures.

- A trenchless manhole rehabilitation system with PREDL-FLEXLINER and fully lined manhole with PPCORPROTECT or FRP-Pipe-liner
- FRP manhole-in-manhole rehabilitation system
- Rehabilitation with PREDL extraordinary constructions made out of FRP



DIGITIZING THE OLD MANHOLE

A prerequisite for all rehabilitation procedures is a 3D laser scanning with the drafting of a rehabilitation proposal. State-of-the-art laser technology enables the exact recording of the old manhole data with subsequent digitizing and creation of three-dimensional rehabilitation models through to the prefabrication of precisely fitting rehabilitation components.



OUR SERVICES:

- 3D-laser scanning with a laser
- Creation of an as-built drawing for the rehabilitating structure
- Creation of an execution drawing of the built parts.
- Technical support during the installation



PREDL-FLEXLINER REHABILITATION TRENCHLESS MANHOLE REHABILITATION

With the PREDL-FLEXLINER, a sustainable trenchless manhole rehabilitation is possible within a few hours. The FLEXLINER is bent together and inserted in the manhole in one piece and non-destructively and unfolded back to its original size in the manhole base.



PREDL-FLEXLINER: MANHOLE REHABILITATION 2.0!

- The installation of a PREDL-FLEXLINER in combination with PP-CORPROTECT or alternatively with a flexible FRP-pipe-liner guarantees a long-term and high-quality rehabilitation.
- Hydraulically optimized channel flow
- Significant reduction in construction time
- The preservation of buildings worth rehabilitation saves valuable resources

PREDL-FLEXLINER IN COMBINATION WITH PP-CORPROTECT



PREDL-FLEXLINER IN COMBINATION WITH A FRP-PIPE-LINER

