

# Sewer manhole with and without corrosion protection in the channel after 15 years



**Synthetic lining - long-term corrosion protection for concrete manholes**

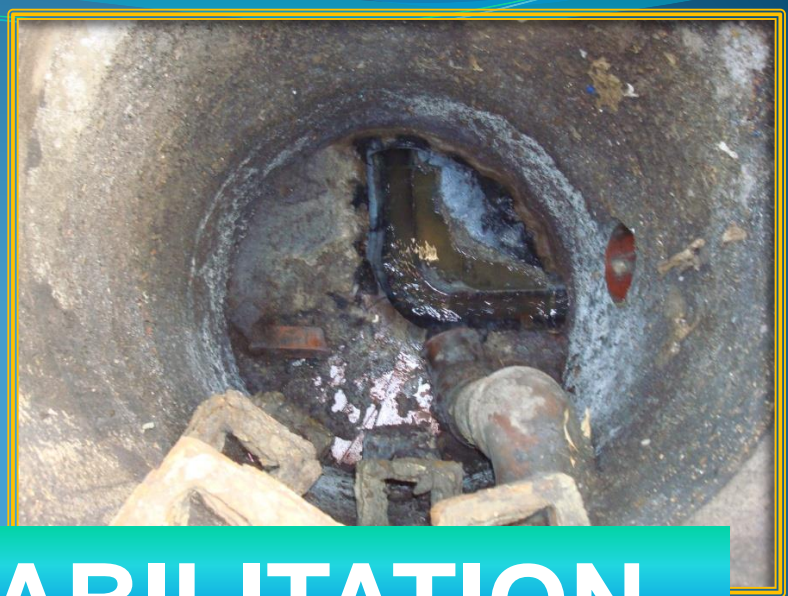
# Coating – equivalent to the PREDL base-liner ?



## Disadvantages of the coating :

- Extensive preparation (clearing work, drying....)
- The manhole does not gain any structural strength
- Often insufficient strength of the bounding laminate





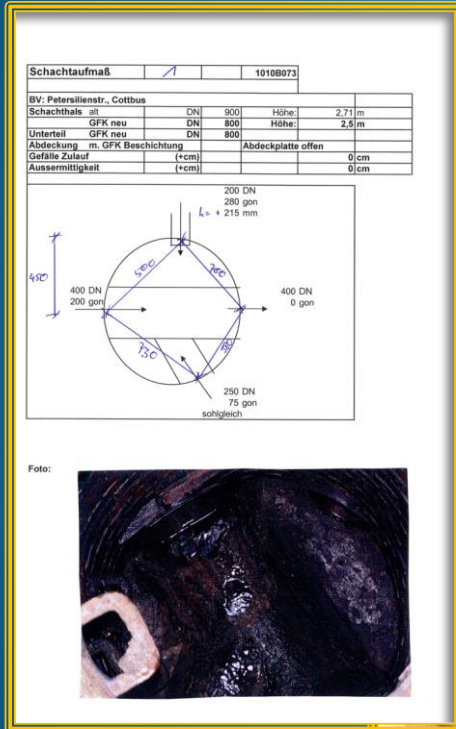
# MANHOLE REHABILITATION





# Modelling of the existing manhole – most important premise for every manhole rehabilitation

## Manual measurement



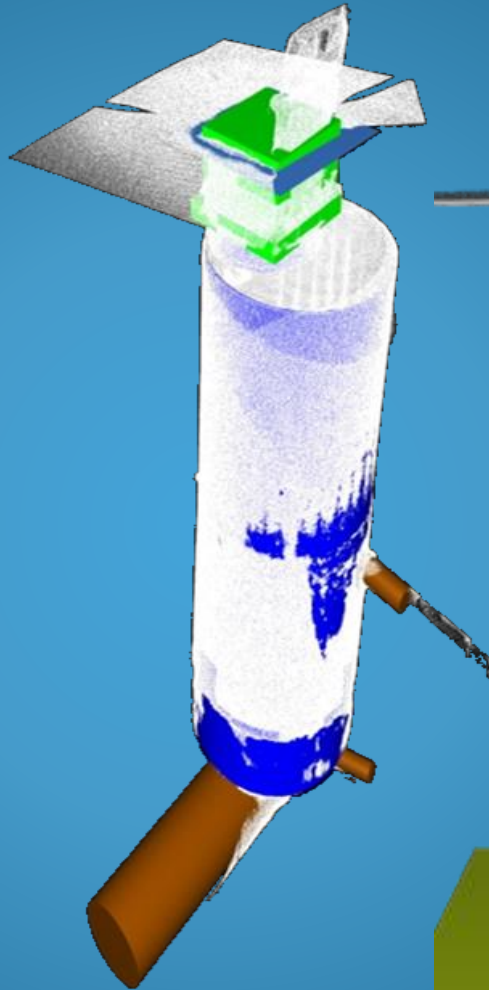
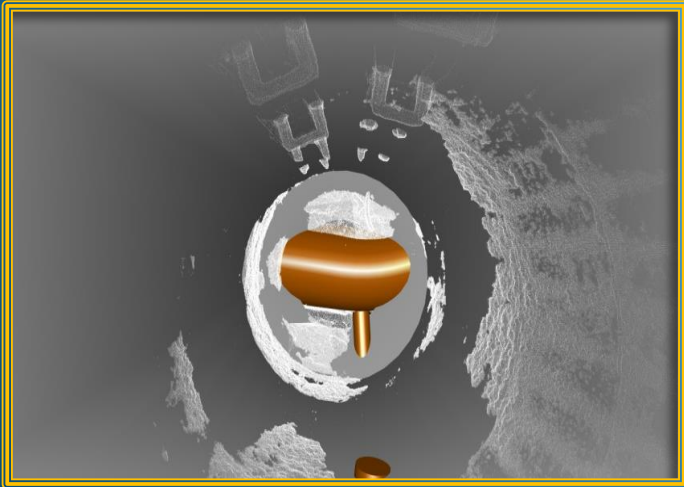
## Laser scan



High error rate as manholes are often not walkable or only with great difficulty

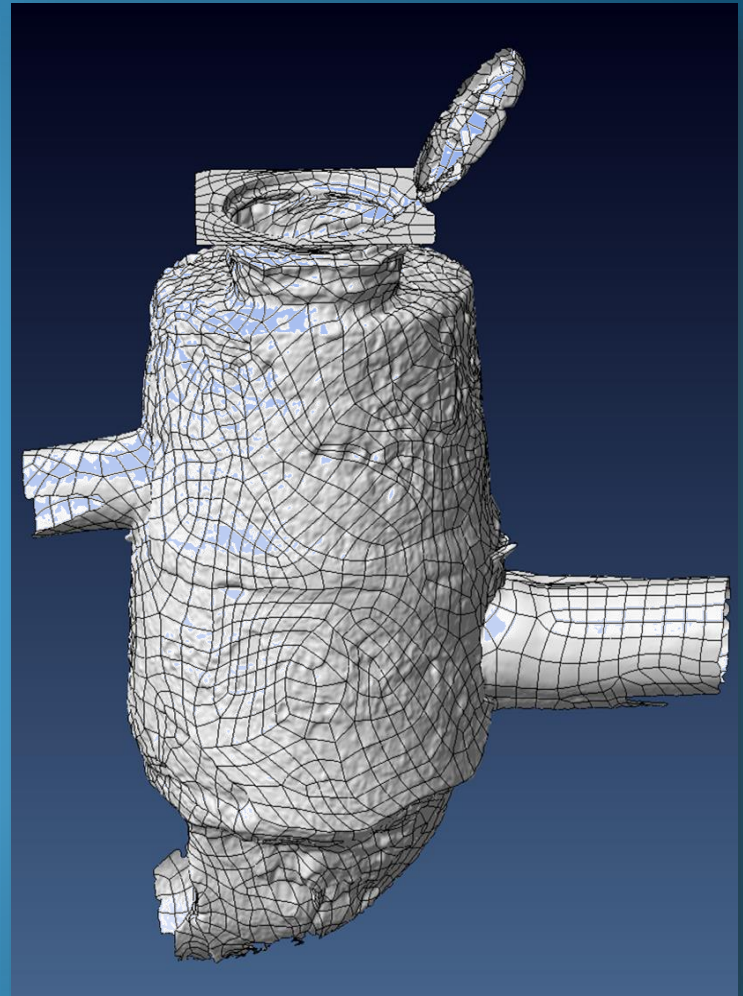
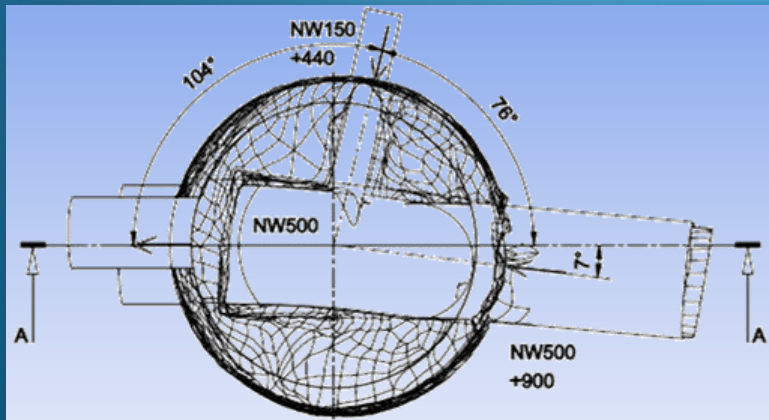
The most modern technology for a precise modelling

# Laser scan – 3D modelling of the old manhole



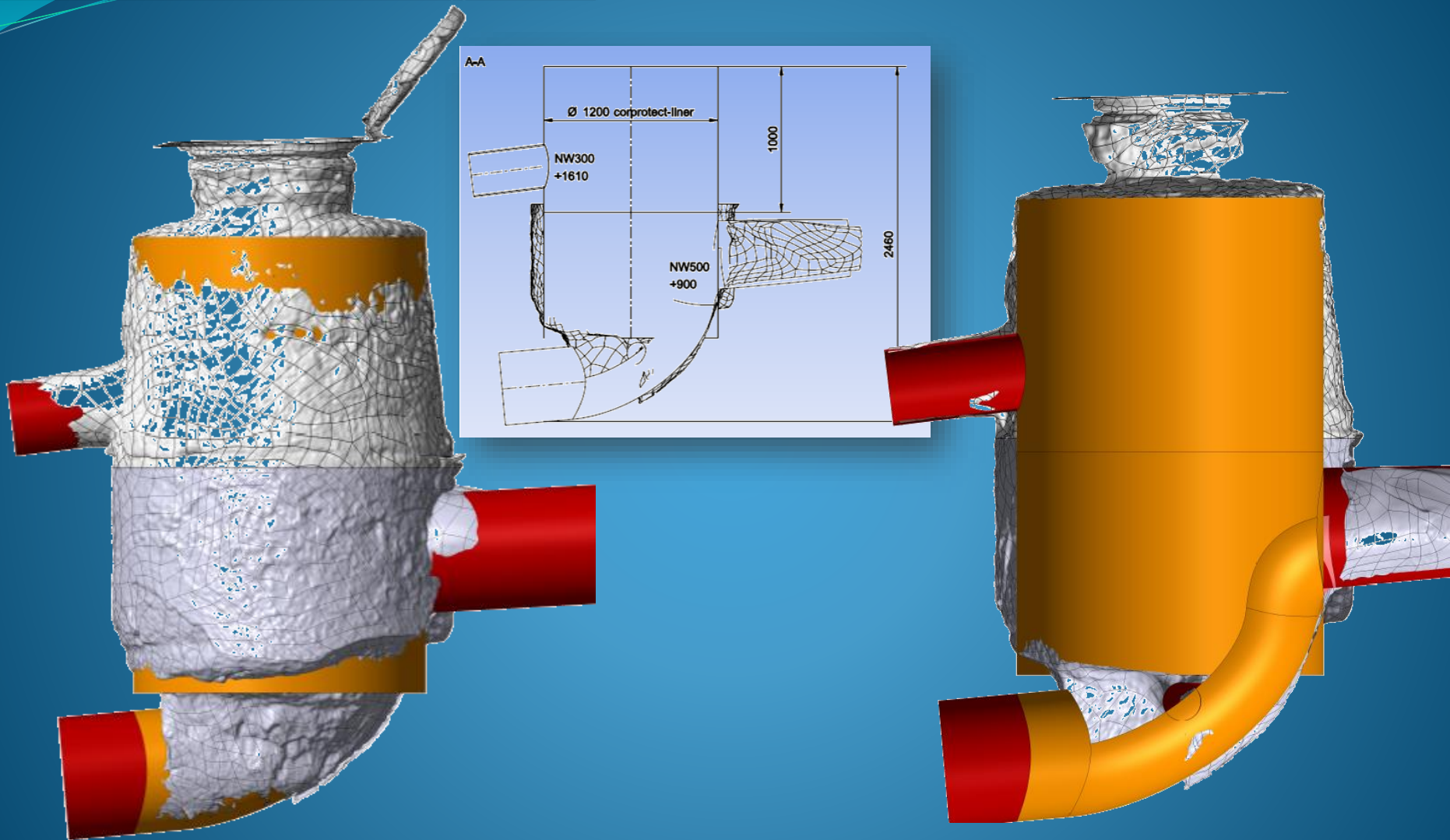


# Laser scan – 3D modelling of the old manhole



Laser scan – Modelling of a manhole that needs rehabilitating in Jersey

# Laser scan – 3D modelling of the old manhole



The scanned data allows a precise processing of the rehabilitation elements.



# Manhole rehabilitation procedures by PREDL GmbH



Rehabilitation with CORPROTECT PP lining  
(coverslab off or through entry hole)



Rehabilitation with GRP base-liner +  
CORPROTECT liner



Rehabilitation with GRP base-liner +  
GRP shaft lining 3 mm



Manhole in manhole solution with GRP  
manhole base + GRP pipe



# Manhole rehabilitating with CORPROTECT lining



Large choice of base-liners from the wide PP standard programme range



Rehabilitation components : PP base-liners, CORPROTECT PP liner also for coverslab, EPS shuttering

# Manhole rehabilitating with CORPROTECT lining



Rehabilitation with CORPROTECT  
In an open field or through the entry hole



Abstützung der CORPROTECT-Auskleidung mit EPS



# Manhole rehabilitating with CORPROTECT lining



# Manhole rehabilitating with CORPROTECT lining

Before

-

afterwards

