

## Rehabilitation with PREDL- FLEXLINER



PREDL-FLEXLINERS are made out of chemical resistant Polyurea and can be installed in the manhole in one piece, without having to be cut up.



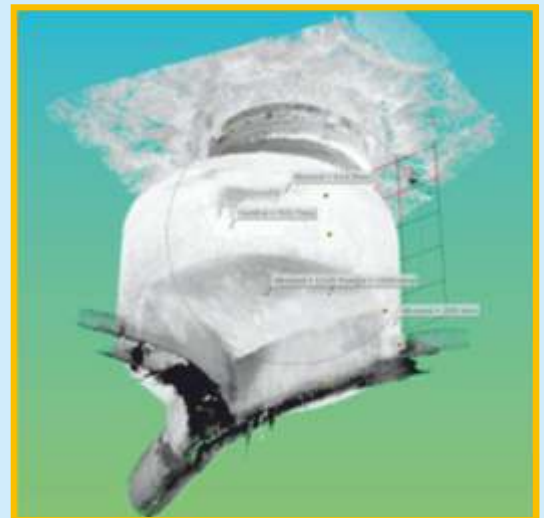
The FLEXLINER can be welded to thermoplastic liners due to the integrated transition strip. A connection to GRP lining is also possible by laminating or gluing.



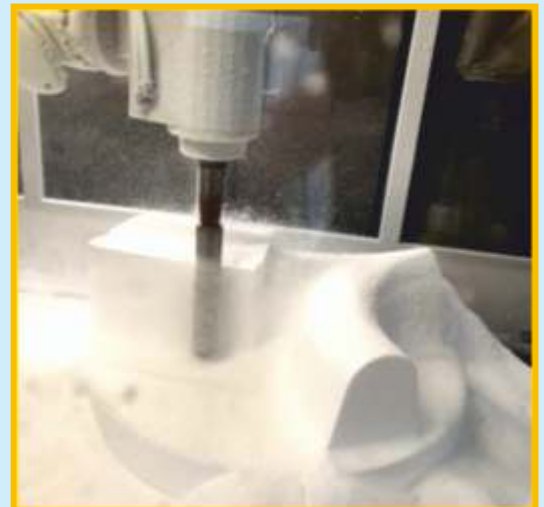
Several solutions are available for connecting sewer pipes or rehabilitation pipe lining : short GRP pipe sockets for GRP pipe liner (wall thickness requested in order to avoid any step in the socket) to be laminated together in the transition area or to be welded to the transition strip with thermoplastic sewer pipes.



# Rehabilitation with PREDL- FLEXLINER



The 3-D laser survey and the digitalising of the gathered data are the premises for producing the bespoke rehabilitation FLEXLINER.



The Styrofoam model has been made with the scanned data and will serve as a negative for making the FLEXLINER and for strengthening it when pouring the grout.



The Styrofoam model is being used as a strengthening for the FLEXLINER when pouring the grout in the manhole base. The Styrofoam strengthening can be delivered in 2 pieces in order to pass through the manhole access hole.

**PREDL GmbH**

Mathias-Loi-Str. 1 · D-04924 Bönitz  
Tel.: +49/35341/619-0 · Fax: +49/35341/619-22

**PREDL® AUSTRIA Ges.m.b.H. —**  
Murbergstraße 80 · A-8072 Fernitz  
Tel.: +43/3135/52657-0 · Fax: +43/313552657-28