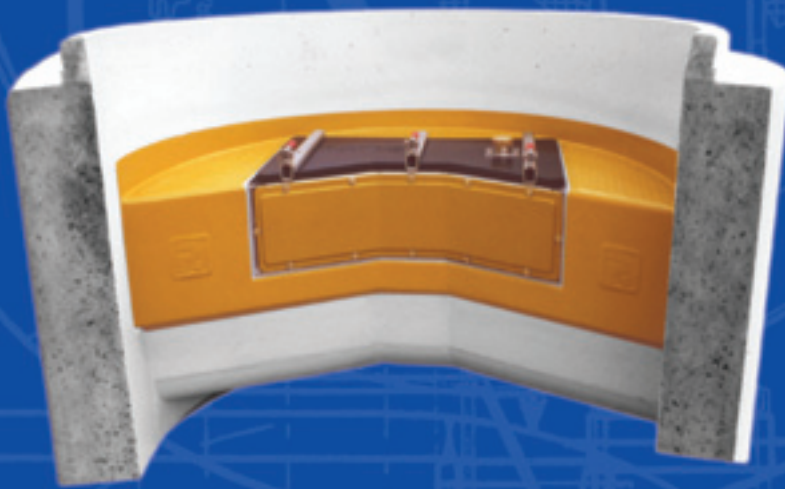


MULTRO[®]-Manhole ring



MULTRO[®]-MANHOLE DN 1500

**MULTRO[®]-MANHOLE RING
WITH ANGLE ACCESS LID**



General Approval
Z-42.1-355
German Institute for building technique Berlin

The MULTRO[®]-Manhole Ring is adapted when the height difference between the water level of the SW/RW is of minimum 850 mm. (minimum 500 mm with MULTRO[®]HA-Manhole DN 1000)

Standard configuration: Straight through* (RW/SW). vertical one above the other.

Configuration with angle change: Angles from 5 to 45 ° can be integrated by shaping the precast support. Ingoing as well as outgoing direction changes are possible as long as they are of the same diameter.

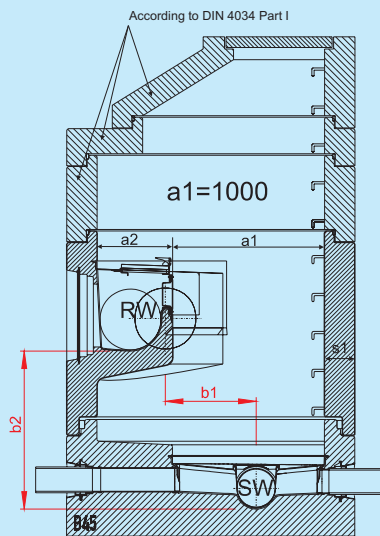
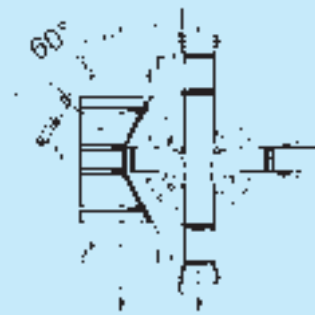
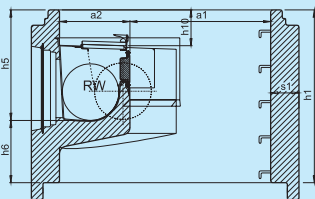
Configuration with incoming branch: Branches can be adapted to the MULTRO[®]-Manhole ring at an angle from 45 to 90 ° left or right.

Configuration against the slope
In certain height conditions and only when the canal reach is not too long, all MULTRO[®]-Manhole rings can be delivered with the slope going against the flow direction , for both channels (RW and SW).

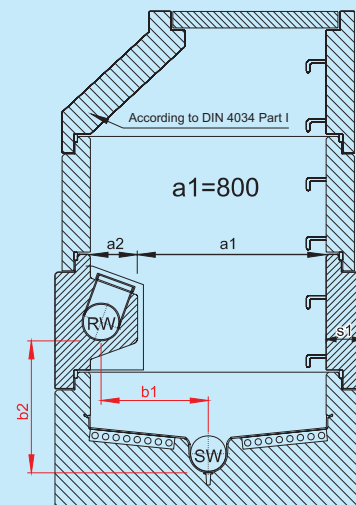
| MULTRO [®] -Manhole Ring DN 1500 | | | | | | | | | | |
|---|------------|------------------|------------------|------------------|------------------|------------------|------------------|------------------|----------------------|---------------------|
| Ø RW | Ø SW | a ₁ * | a ₂ * | b ₁ * | b ₂ * | h ₁ * | h ₅ * | h ₆ * | h ₁₀ min* | s ₁ min* |
| 250 | max. 250** | 1000 | 500 | 0 - 550 | min. 850 | 1000 | 700-880 | 120-300 | 200 | 200 |
| 300 | max. 300** | 1000 | 500 | 0 - 550 | | 1000 | 700-880 | 120-300 | 200 | 200 |
| 400 | max. 300** | 1000 | 500 | 0 - 550 | | 1000 | 700-880 | 120-300 | 200 | 200 |
| 500 | max. 300** | 1000 | 500 | 0 - 550 | | 1250 | 900-1050 | 200-350 | 200 | 200 |
| 600 | max. 300** | 1000 | 500 | 0 - 550 | | 1250 | 900-1050 | 200-350 | 200 | 200 |

*Ask the concerned manufacturer for his tolerance dimensions
** SW max until D N1000, than b₂ = SW diameter + 550 mm

MULTRO[®]-Manhole Ring DN 1500



MULTRO[®] house connected manhole DN 1000



| MULTRO [®] house connected Manhole DN 1000 | | | | | | | | | |
|---|------|------------------|------------------|------------------|------------------|------------------|------------------|-------------------|---------------------|
| Ø RW | Ø SW | a ₁ * | a ₂ * | b ₁ * | b ₂ * | h ₁ * | h ₆ * | h ₁₀ * | s ₁ min* |
| 150 | 150 | 800 | 200 | 400 | min. 500 | 500 | 130 | 250 | 120 |
| Angle deviation for branches: | | | On request | | | | | | |

*Ask the concerned manufacturer for his tolerance dimensions

Suggestion for the amendment of a prescription text according to EN 1917

MULTRO[®]-Manhole rings as an allowance for precast concrete manhole DNwith two pipe connections straight through, a one-piece concreted in synthetic base including connection bells integrated in the manhole wall with seal and a watertight inspection access (standard lid with stainless steel frame 250x150 mm), height position for RW variable ; pipe diameter,

RW inlet : DN.....
RW outlet : DN.....
Pipe material :.....
Carried out according drawing n°.....
Extra for angle access trap (800 x 350 x 220 mm)